

Manual pointing machine VS-20



Pražská strojirna a.s.



+420 284 810 852



info@pstroj.cz



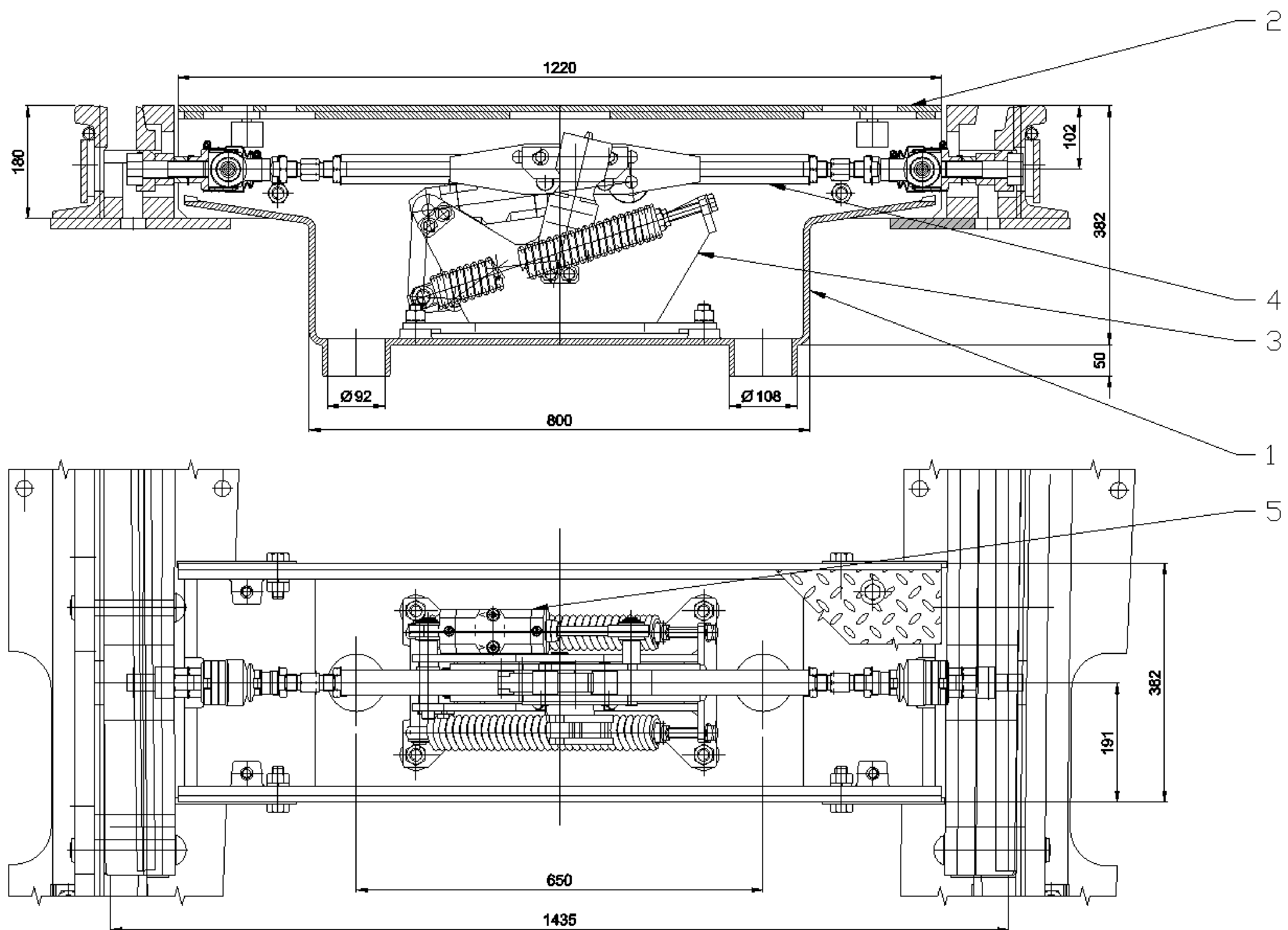
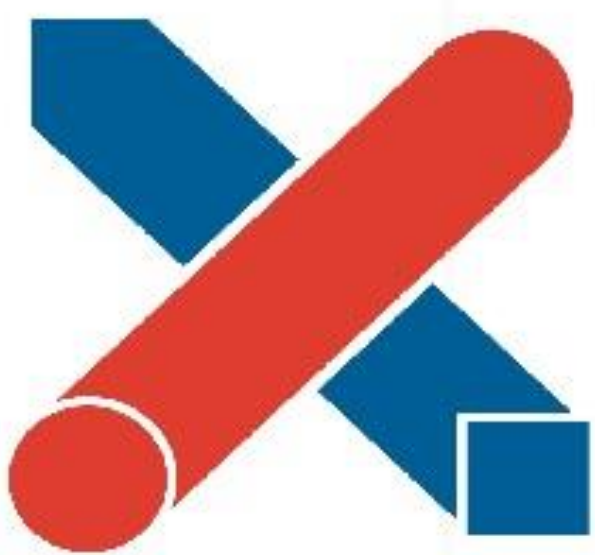
www.pstroj.cz

- Setting device VS-20 is designed for holding blades of trailing direction turnouts in end positions. The standard setup secures blades in position that is given by the last tramway passage. Reversible adjustment reverses blades after the tram passage back to a preselected position, which is done by the position of the setting pocket.
- VS-20 is ecologically friendly, guarantees noiseless function, and features a long life with minimum maintenance requirements. A Setting system can also be supplied in the design for single blade turnouts in alternatives for placement inside or outside to the track assembly.
- The Setting system can be extended by the optional set of the blade position signaling sensors.

Securing:

- in normal connection: down-pressure of the setting rod into position given by the last passage
- in reverse connection: down-pressure of the setting rod into position preselected by resetting the setting pocket

Manual pointing machine VS-20



Description:

1 - Earth case

2 - Earth case cover

3 - Patented pointing mechanism Z-60

4 - Setting rod

5 - Two impact dampers

Device can be equipped by adaptor set with position sensors. All used materials guarantee high reliability and moisture resistance. Central drainage in earth case allow connection to track drainage system.

Pražská strojirna a.s.



+420 284 810 852



info@pstroj.cz



www.pstroj.cz

Technical parameters:

Minimum track gauge	1000 mm
Lift of changeable switch blades	36 to 70 mm
Press-down force of flexible mechanism	0.85 to 3.17 kN (normal connection)
Press-down force of spring mechanism	1 to 3.2 kN (reversible connection)
Connection setting rod/tongue	according turnout type
Manual setting moment	170 to 420 Nm
Permitted axle load on earthcase cover	12000 kg
Earth case cover weight	58 kg
Overall weight approx.	approx. 250 kg