

## Flat bottom LRT turnouts – T rail:



### Flat bottom LRT turnouts – T rail:

- The flat bottom turnouts are designed for high-speed tramway tracks and LRT tracks. Turnouts are manufactured from rails in the profile and the quality required by customer in Left and Right configurations. Modern design results in a high level of safety, silent and environmentally friendly operation, and a long life with minimal maintenance requirements.

**Pražská strojirna a.s.**



+420 284 810 852



info@pstroj.cz



www.pstroj.cz



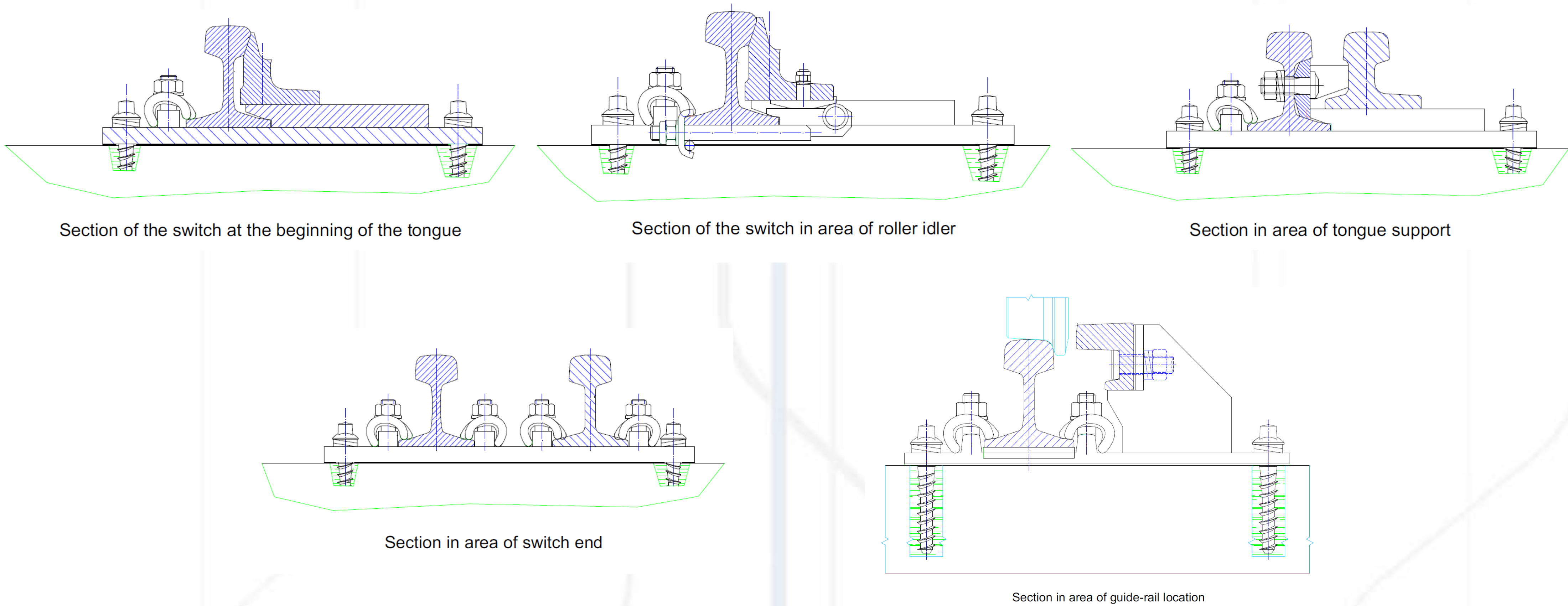
### Advantages:

- Safe and smooth passage in a straight or branching direction, in cooperation with a manual or automated facing or trailing setting system.
- Construction enables the use of modern unified setting devices with setting and checking rods.
- Minimal maintenance requirements.

Pražská strojirna a.s.



Flat bottom LRT turnouts – T rail:



Description:

• Turnouts are in a standard design that is compliant with VDV regulations. Stock rails are manufactured from 49E1 rails, grade R260, tongues from 49E1A1, grade R260, and guide rails from 33C1 profile. Tongues are placed on sliding phosphate stools and roller idlers SCHWIHAG that are mounted to sleepers. Stock rails are fixed in a flexible manner along the entire length using Skl12KTL and flexible SSb2 braces SCHWIHAG that pass through the internal part of the idlers. Between stock rails and tongues tongue supports and locks are placed to avoid mutual movement. Both turnout branches are electrically wired using copper rope with a conical pin and a M16 bolt. Switch heating is provided by 8 heating elements consisting of resistive conductors in 11 x 5,5 mm oval stainless pipe. Heating elements are fixed to stock rails and tongues by flexible stainless clips and fix braces at the beginning.

Type	1:6	1:7,5	1:6,6	1:7,5	1:9	1:9	1:11	1:12	1:14	1:18,5
Radius	R150	R150	R190	R190	R190	R300	R300	R500	R760	R1200
Rail	49E1	49E1	49E1	49E1	49E1	49E1	49E1	49E1	49E1	49E1
Gauge	1435	1435	1435	1435	1435	1435	1435	1435	1435	1435
a	12414,5	9956	14312	12611	10523	16615,5	13608,5	20797	27108	32409
b	12414,5	9956	14312	12611	10523	16615,5	13608,5	20797	27108	32409
c	12414,5	12944	15727	12611	16615	16615,5	20000	20797	27108	32409
d	-	2988	1415	-	6092	-	6391,5	-	-	-
e	20748,5	20766	23356	23352	23478	29343	29426	37881	46704	58686
L	24829	22900	30039	25222	27138	33231	33608,5	41594	54216	64818
Alpha	9° 27' 44,45"	7° 35' 40,72"	8° 36' 56,33"	7° 35' 40,72"	6° 20' 24,69"	6° 20' 24,69"	5° 11' 39,94"	4° 45' 49,11"	4° 05' 08,22"	3° 05' 38,61"

Pražská strojirna a.s.



+420 284 810 852



info@pstroj.cz



www.pstroj.cz

