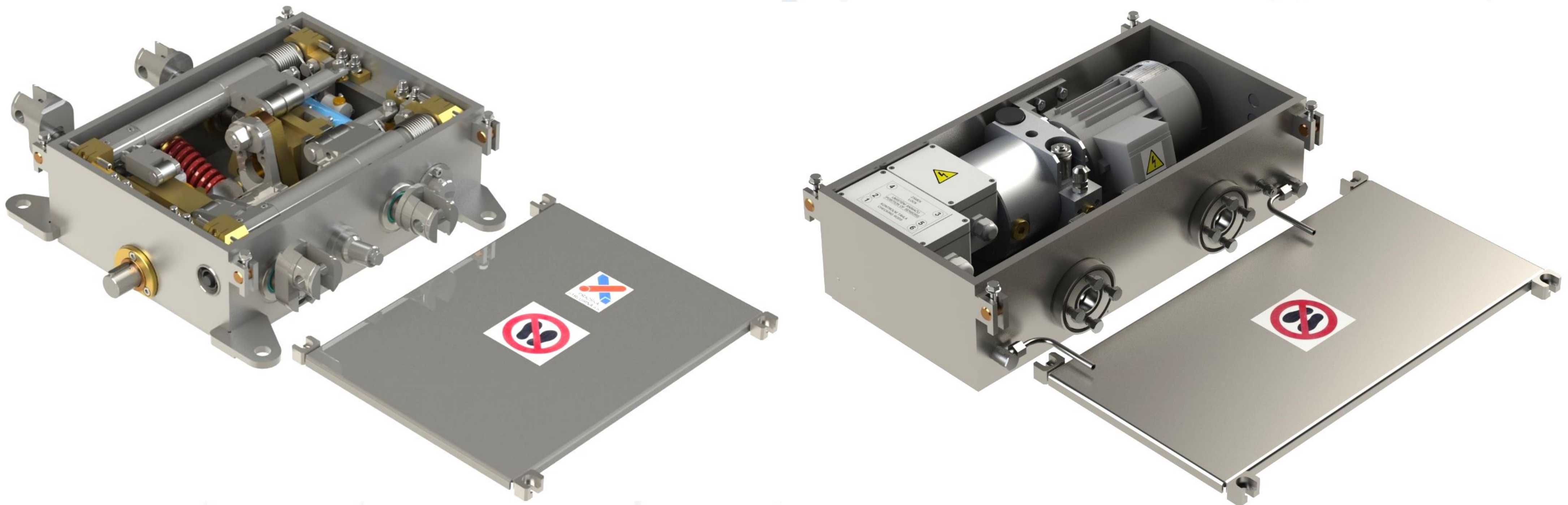
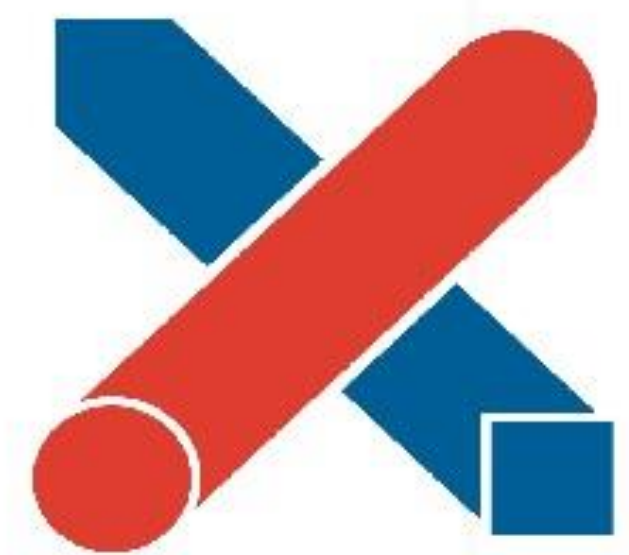


Design work



Pražská strojirna a.s. has been engaged in the development and production of tramway crossings and complete track superstructure accessories for more than a century, using its own top-notch design capabilities. Our experienced designers, who work with modern CAD systems, especially advanced 3D-modelling software, create detailed digital models and then derive precise drawings for production processes and inspection operations from them. This software allows for complex design designs of machine and equipment assemblies, including individual components such as workpieces, welded structures or sheet metal parts.

Part of the technical preparation of production is also the creation of CNC programs in the CAM system for advanced production machines, including milling machines, multi-axis machining centres, lathes, carousels and other specialized equipment. This process ensures high accuracy and efficiency in the processing of individual parts and complete assemblies.

In cooperation with professional geodetic and design offices, we prepare detailed production documents for the reconstruction, repair and modernization of railway lines and crossings. This process includes precise geodetic surveying, technical analyses and subsequent implementation of tailor-made solutions that meet the highest standards of safety and operational reliability. Thanks to the combination of tradition, modern technologies and expertise, Pražská strojirna a.s. has long contributed to the development and sustainability of rail transport not only in the Czech Republic, but also internationally.

Pražská strojirna a.s.



+420 284 810 852



info@pstroj.cz

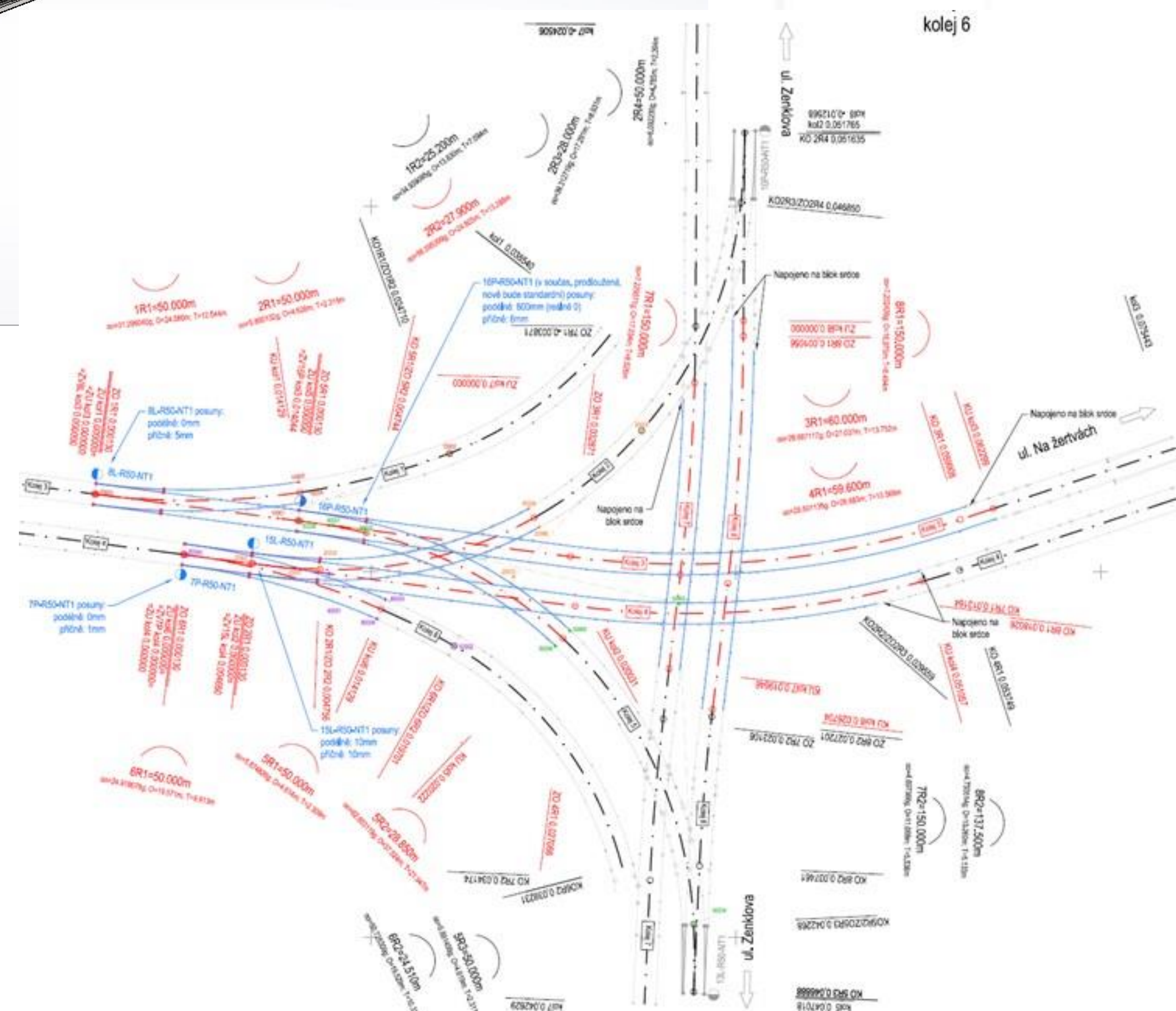
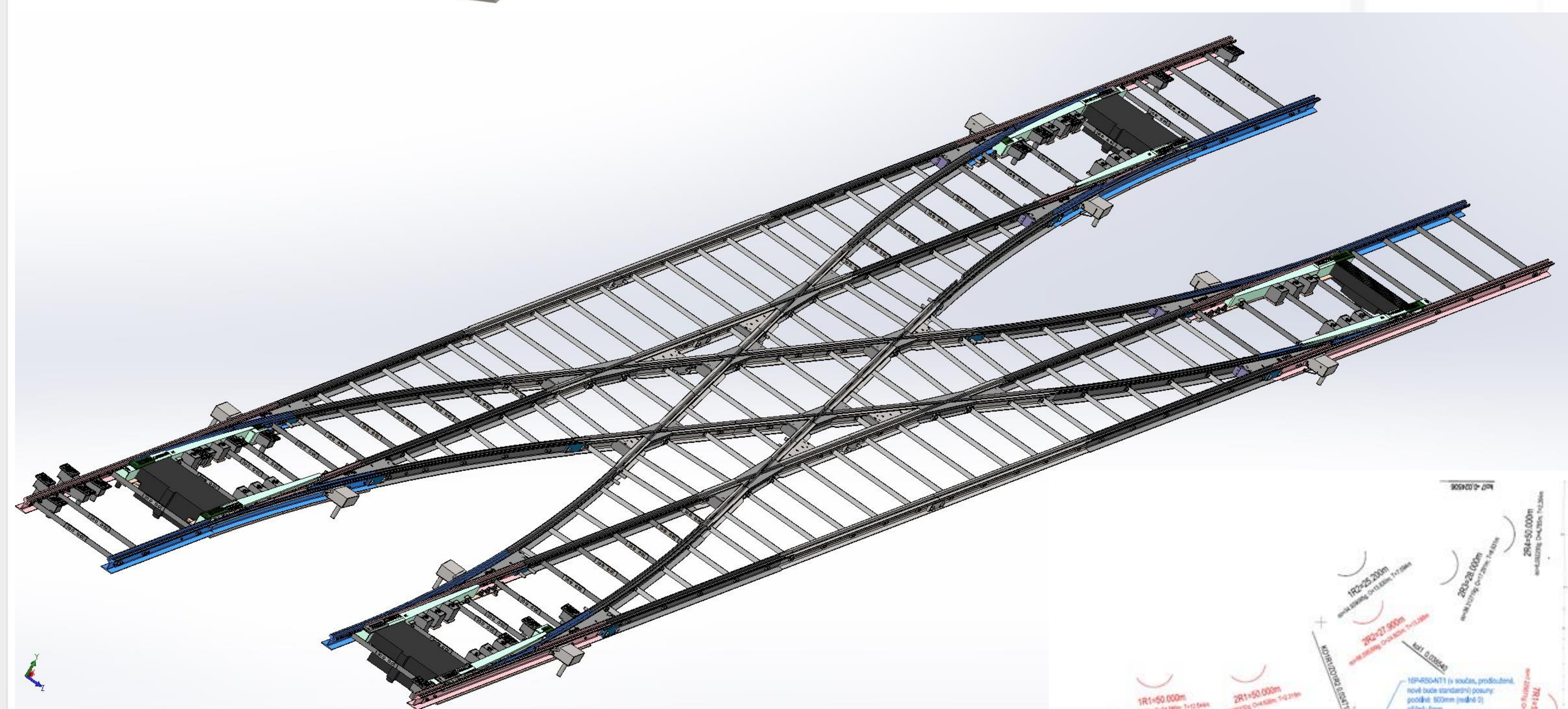
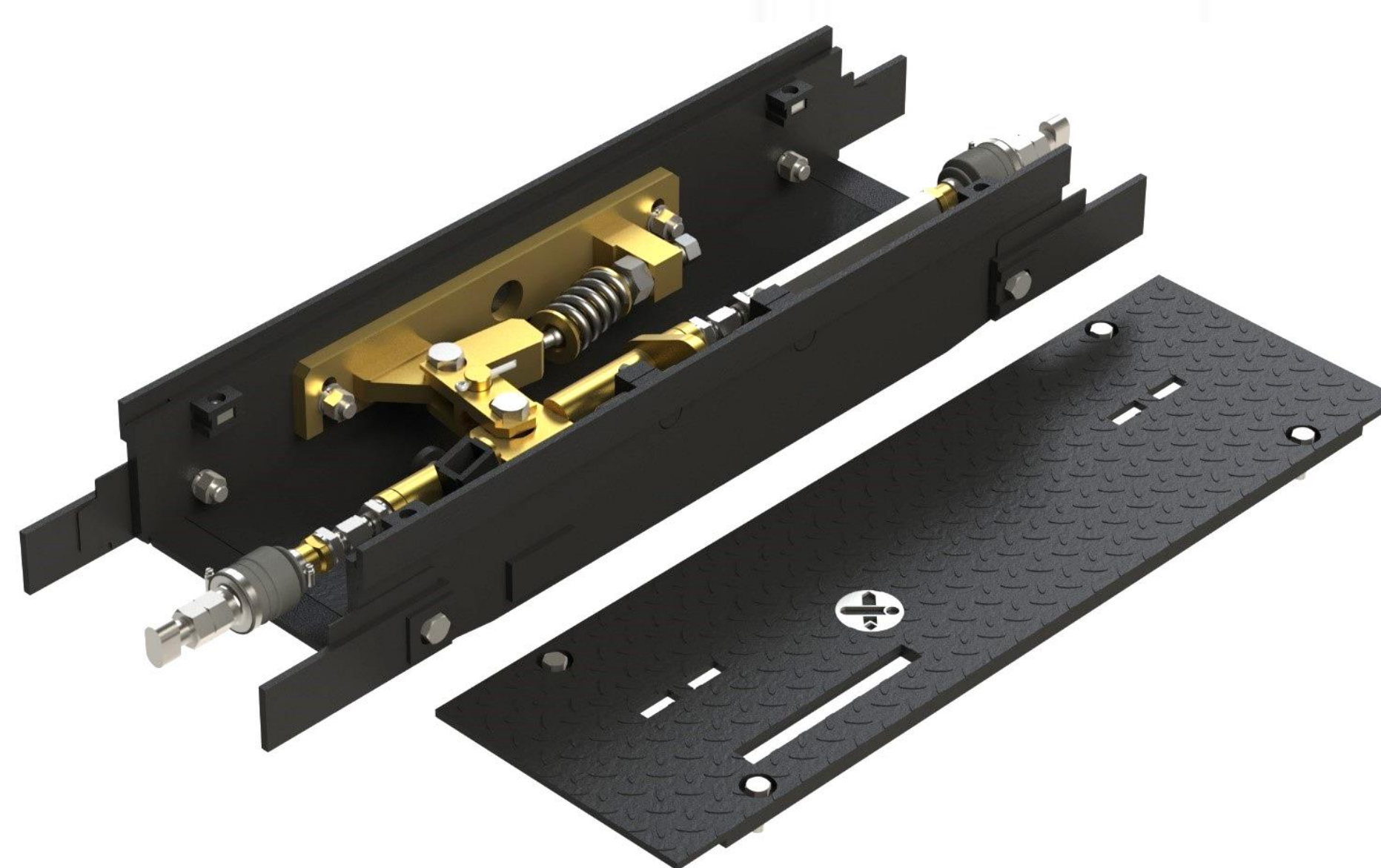
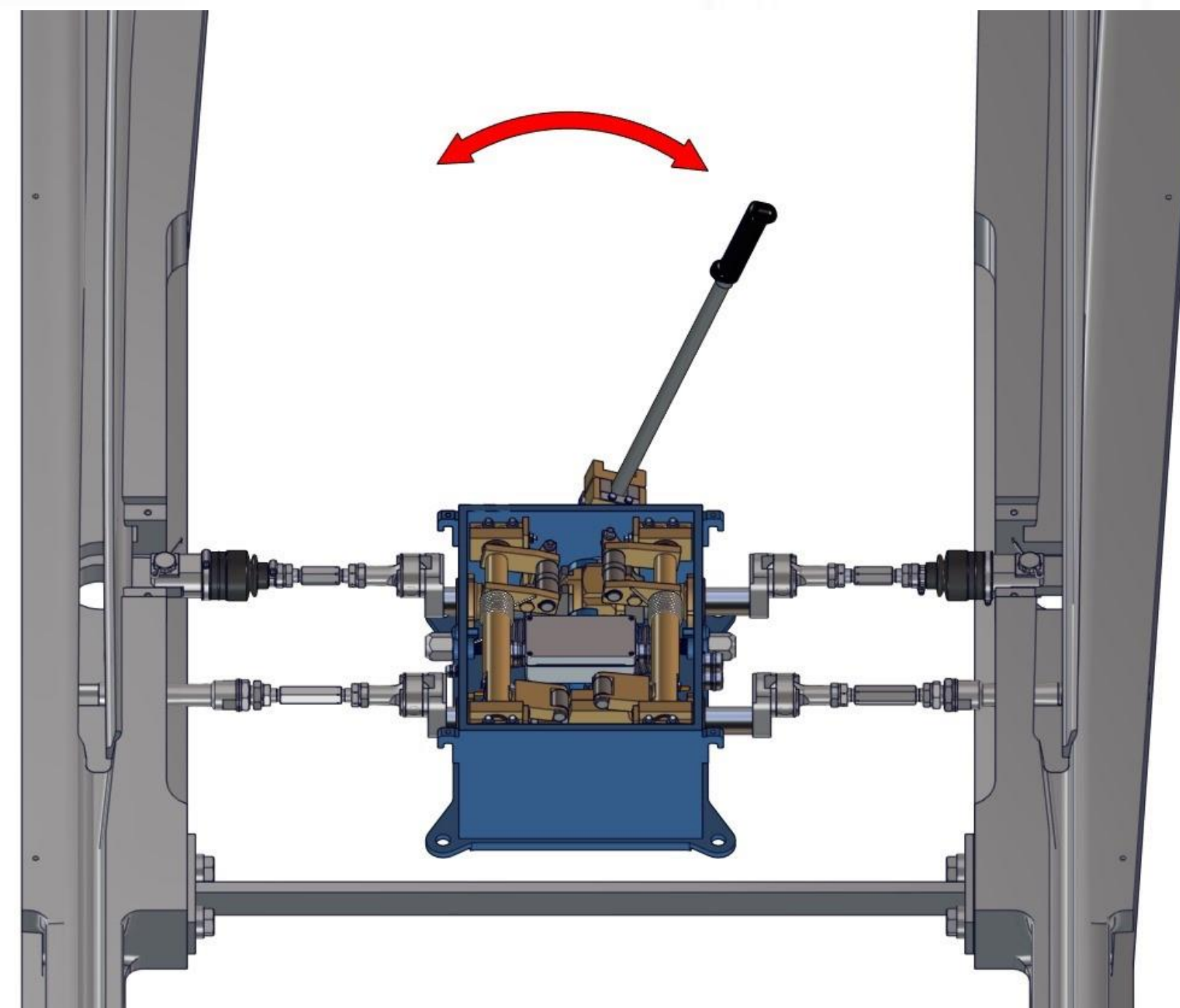
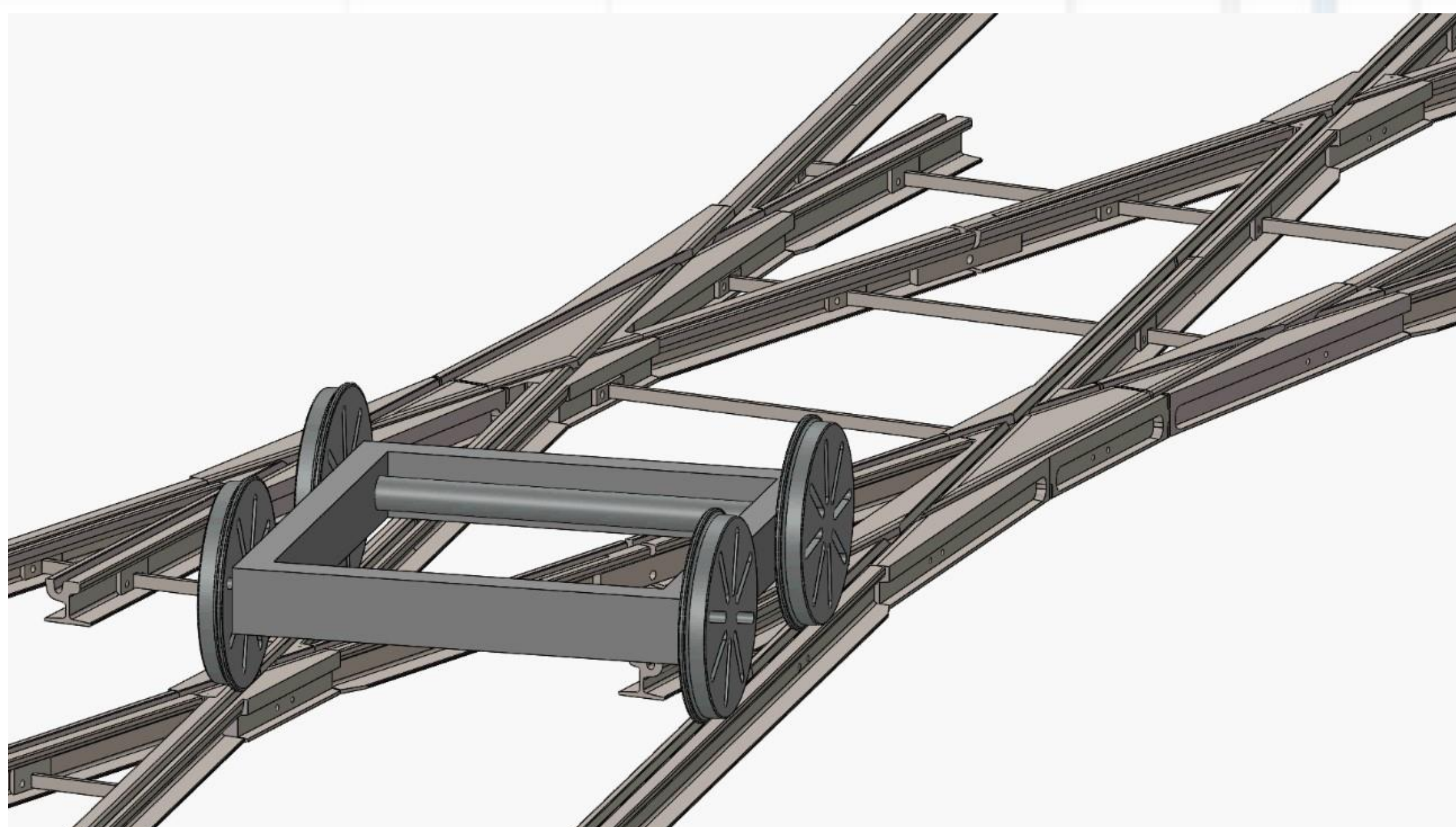


www.pstroj.cz



Pražská strojirna a.s.

Design work



Pražská strojirna a.s.



+420 284 810 852



info@pstroj.cz



www.pstroj.cz

Pražská strojirna a.s.