



PRAŽSKÁ
STROJIRNA a.s.

Tramway track drainage

A comprehensive approach to tramway track drainage makes it possible to drain water from the entire width of the tramway track or its part in sections trafficked by road vehicles and in grassy sections.



Drainage of tram track before application of tarmac cover



Box drainage into gauge



Installation of drainage boxes into gauge



Solution for tracks where drainage is embedded into a grass layer

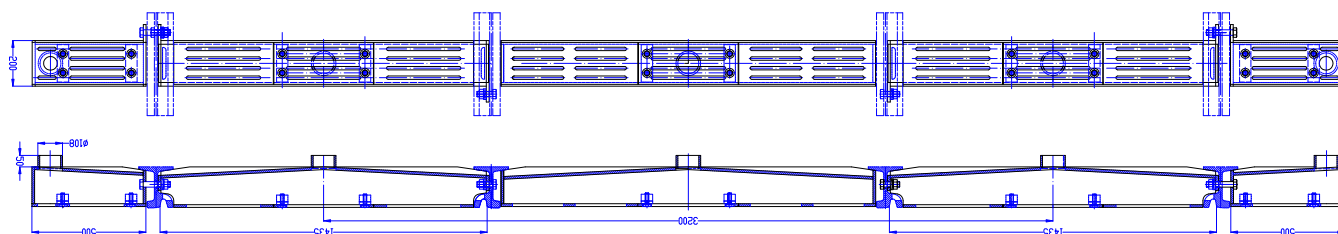
Securing:

- complete drainage of the tramway track surface and drainage of the rail groove



... all for the modern tramway track

1. Implementation for sections trafficked by road vehicles consists of three elements:



Description:

a) Drainage into gauge – 2 units.

Pražská strojírna manufactures this drainage as a weldment with a removable small cover. The drainage is designed so that the cover does not loosen and so that no noise is formed due to crossing of road vehicles.

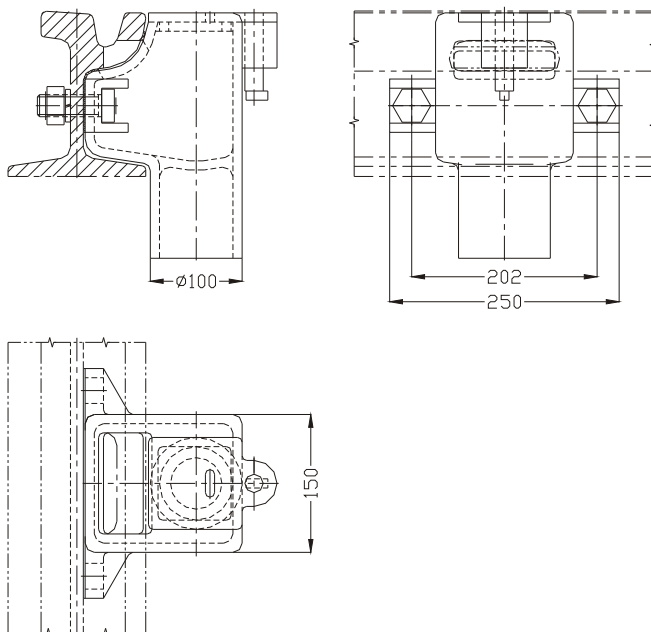
The water drainage removes both the surface water from the tramway track and the water from the rail groove. This drainage may be used in open track, but we recommend that it be used for draining the rail groove before switches.

b) Draining to the intermediate track gauge - 1 unit

This drainage system is designed as a weldment, always for the particular size of the intermediate rail gauge. The draining box is on the rail legs and serves for draining the surface water from the tram track.

c) Side drainage – 2 units.

This is designed as a weldment for draining the entire width of the road up to the walkway. It can be either a standard length of 500 mm or a length defined by the consumer.



2. Design for the grassy sections of the tramway track - special casting drainage:

Description:

Drainage is constructed as a cast piece with a cover. The casting is screwed with two bolts (part of the delivery) to the rail through the distancing rubber (also a part of the delivery).