

## Setting device VSP-20

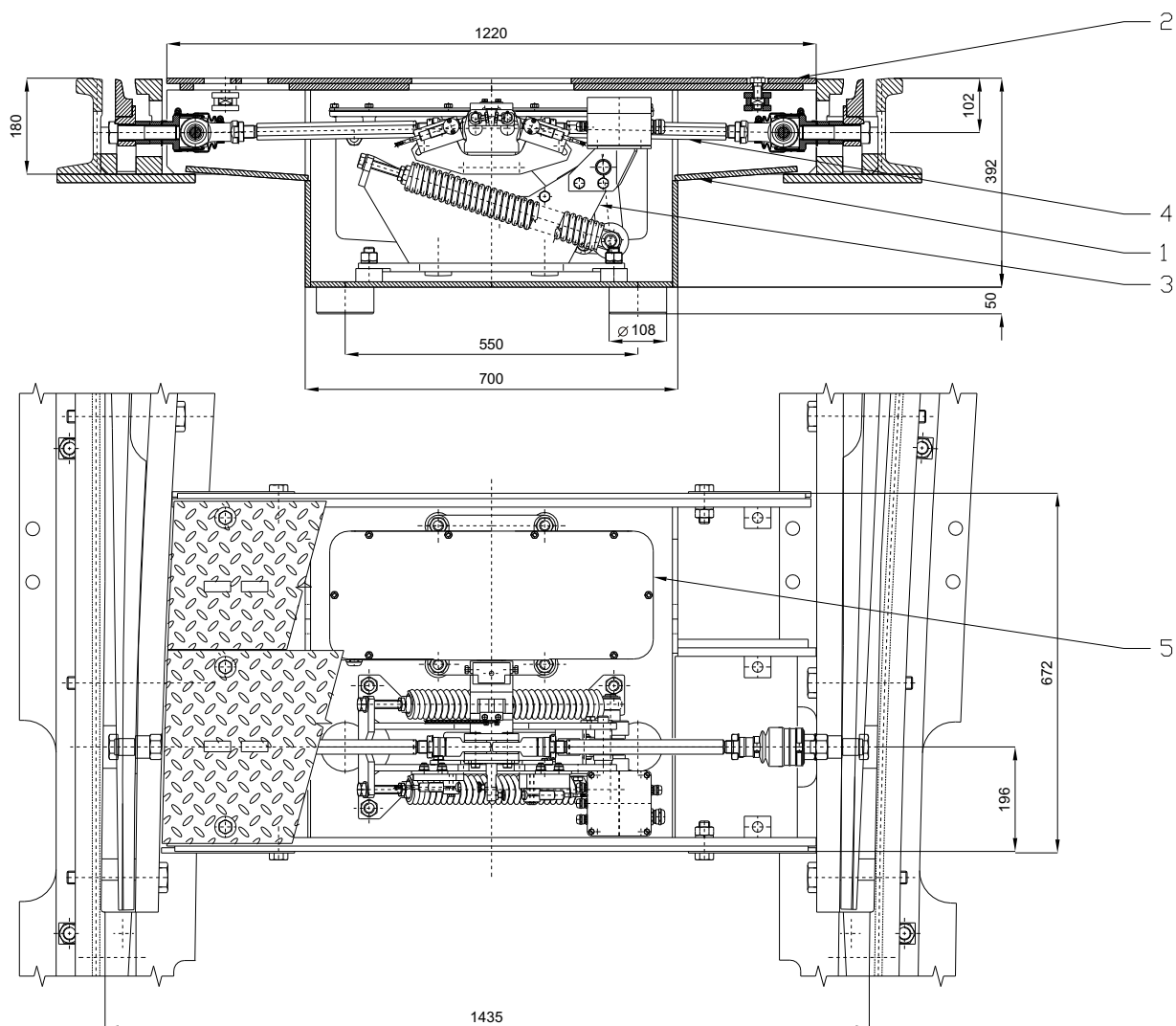
Setting device VSP-20 is intended for mechanized or, as the case may be, manual resetting of turnouts with flexible blades into the required direction and for holding the turnout blades in extreme positions. It guarantees a quiet function, is ecologically harmless and features a long lifetime with minimum demands for maintenance. Setting system VSP-20 can be supplied in an alternative for single-blade turnouts, either with placement inside the track gauge or sideways outside the track gauge.



### Securing:

- automated resetting of turnouts and the down-pressure of the setting rod in both extreme positions
- signalling both extreme positions of the setting rod
- signalling of blocking the command for resetting when inserting the key into the setting pocket

## Setting device VSP-20



### Description:

Setting device VSP-20 consists of the ground box (1) with covers (2), in which point box Z-75-R (3) is fastened with a rod set (4) and optionally either electromagnetic point machine EMP-44 with damper DD-100 or electro-hydraulic point machine EHP-40 (5). All the units are waterproof, the materials and components used during their production guarantee the high reliability of the equipment.

### Technical parameters:

minimum track gauge	from 1,000 mm
lift of the turnout blades	36 to 70 mm
connection of the setting rod to the blades	bolt M27 or according to the turnout type
setting force on the rod	approximately 5 kN
press-down force of the spring mechanism	0.5 to 4 kN
moment for manual resetting	80 to 350 Nm
time of mechanized resetting (adjustable)	0.6 to 1.5 s
operational voltage of electromagnetic point machine EMP-44	400 to 850 V DC
operational voltage of electro-hydraulic point machine EHP-40	230 / 400 V AC
normal current at a voltage of 600 V DC	max. 10.5 A
control voltage (contact-free position sensors)	24 V DC
permitted load of the axle on the cover of the ground box	12,000 kg
maximum mass of the ground box cover	50 kg
overall mass	approximately 450 kg