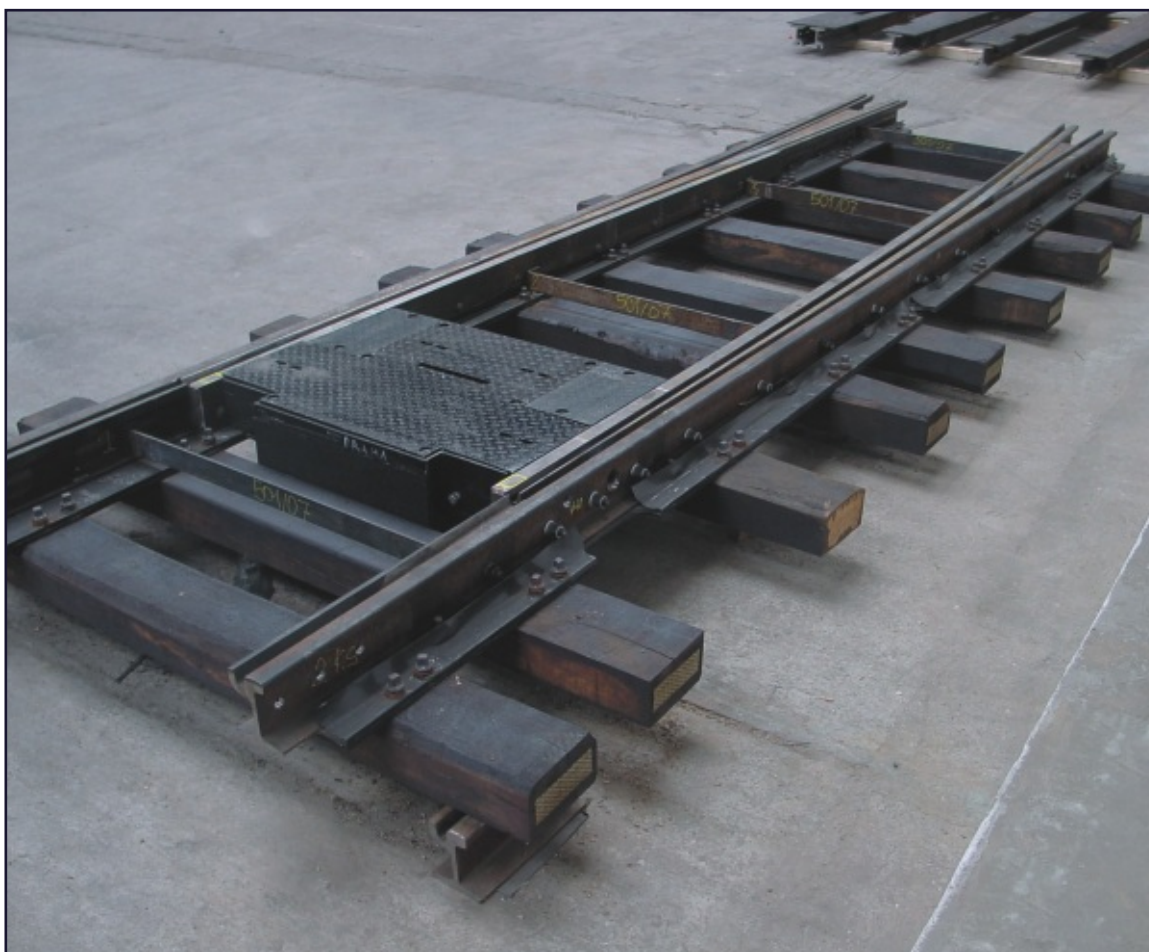


Tramway turnouts with flexible blades

Tramway turnouts with flexible blades are made for right and left branching and can be used as trailing or facing. They are constructed for use in the most demanding conditions of tramway tracks.

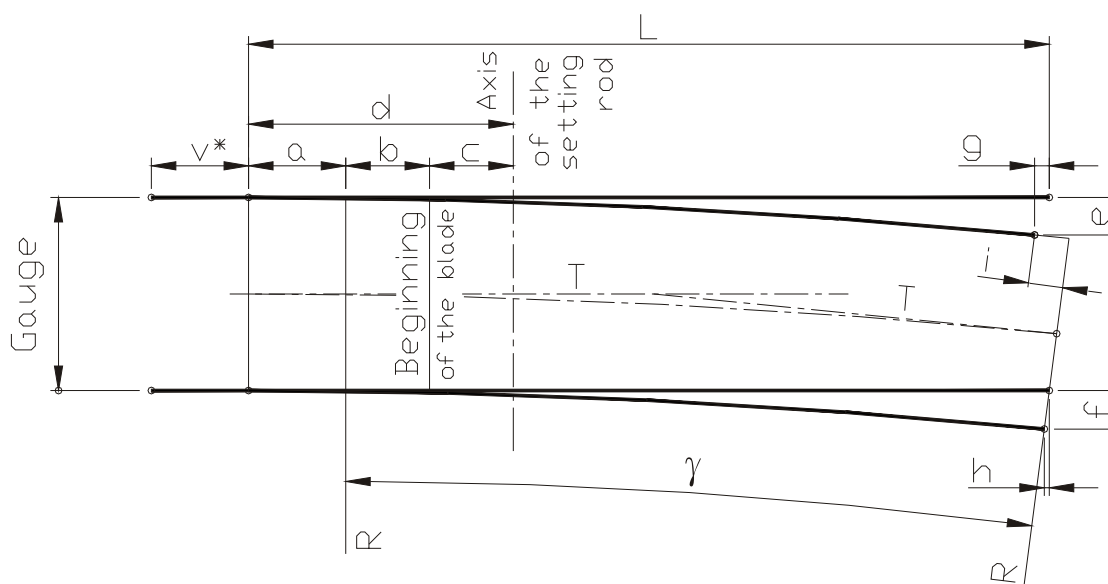
They guarantee a high degree of passage safety, quiet function, are ecologically harmless and feature a long life-time with minimum demands for maintenance.



Securing:

- in cooperation with the facing or trailing direction setting system, automated or manual resetting of the turnout blades to the required direction and thus a safe tramway passage straight or in the branching direction
- the turnout construction enables usage of modern, unified setting devices with the setting and checking rod

Tramway turnouts with flexible blades



Rail	R = 50 m				R = 100 m		R = 150 m	
	Ri59, Ri59N, Ri60, Ri60N		NT1, NT3		Ri59, Ri59N, Ri60, Ri60N, NT1, NT3		Ri59, Ri59N, Ri60, Ri60N, NT1, NT3	
Gauge	1,000	1,435	1,000	1,435	1,000	1,435	1,000	1,435
L	5,000	5,000	4,660	4,660	7,000	7,000	8,500	8,500
v *	350	350	0	0	200	200	0	0
γ	5° 47' 14"	5° 48' 48"	5° 16' 25"	5° 16' 25"	4° 01' 51"	4° 02' 23"	3° 15' 27"	3° 15' 44"
	6.4305 g	6.4589 g	5.8595 g	5.8595 g	4.4787 g	4.4885 g	3.6196 g	3.6249 g
a	0	0	130	130	0	0	0	0
b	650	650	280	280	800	800	1,000	1,000
c	350	350	310	310	400	400	400	400
d	1,000	1,000	720	720	1,200	1,200	1,400	1,400
e	247	247	203	203	243	243	240	240
f	253	253	209	209	246	246	242	242
g	8	8	3	7	6	6	4.5	4.5
h	9	9	0	3	6	6	4.5	4.5
i	101	145	132	132	70	101	57	82
T	2,527	2,539	2,303	2,303	3,519	3,527	4,255	4,242

v * is only in case of using electric heating type VDV

Description:

The turnout is made of tramway rails of the profile required by the consumer (NT1, NT3, Ri60, Ri60N, Ri59, Ri59N, Ph37, NP4 etc.). Both turnout blades (curved or straight) are welded; the rail part of the blade is made of the tram rail of the profile and quality defined by the customer, the flexible part of the rail material of quality UIC900 or another quality. Both parts - rail and flexible - are resistor-welded together. The frames of the half-turnouts are made as weldments and are welded along the entire length to the underlay steel sheet. The upper plates of the frames form sliding plates for the blades. The half-turnout rails (stock rails) are tightened to the sides of the frames and the underlay steel sheets with the help of M24 bolts. The rail part of the blades is tightened to the underlay steel sheets with M24 bolts.

Technical parameters:

track gauge according to the customer's needs (1,435, 1,000, 1,600, 1,524 mm etc.)
rail profile according to the customer's requirements (NT1, NT3, Ri60, Ri60N, Ri59, Ri59N, Ph37, NP4 etc.)
branching radius standard is 50 m, 100 m, 150 m or according to the customer's needs