

Heating the tramway turnouts

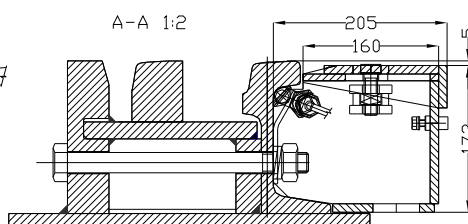
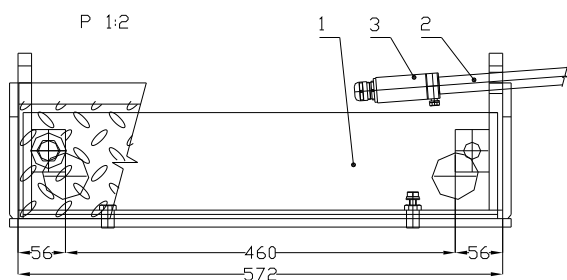
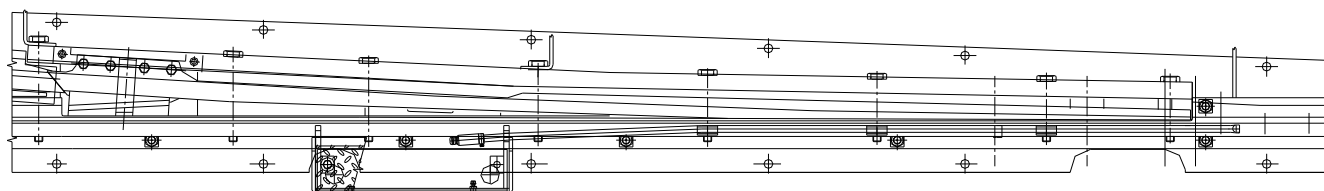
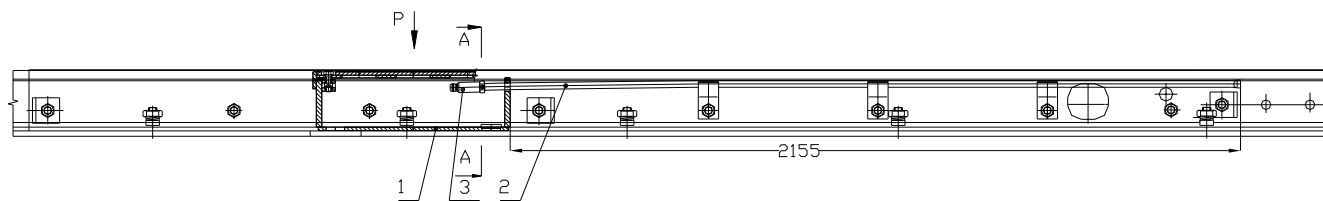
The equipment serves for heating switches with flexible or pin blades for securing their proper function at air temperatures below zero and under unfavourable conditions (ice, snow). Heating can be operated either as non-regulated (direct on/off switching of the heating), or as non-regulated depending on the ambient air of the environment. The function of direct or regulated heating can be selected by setting the heating regime in the control system of the turnout control.



Securing:

- The equipment serves for heating switches for securing their proper function at air temperatures below the freezing point and in unfavourable conditions (ice, snow)

Heating the tramway turnouts



Description:

Turnout heating consists of the following parts:

1. installation box with a cover that can be loaded with an axle pressure of 12 t
2. heating system cover
3. heating system supplied with a voltage of 600 - 750 V DC, at the output of 600 W

Parts of the heating Nos. 1 through 3 are installed independently for every turnout blade.

Technical parameters:

heating system type	0403 R8 ML ELUX (Germany)
rated operational voltage of the heating device	600 V DC
heating device output	600 W
ingress protection of the heating device connection (after installation)	IP - 68
heating device dimension	heating body diameter 8 mm 2,200 mm long