

Tramway crossing



Description:

For the production of crossings Pražská strojírna a.s. uses its own standard and special turnouts, switches, point systems, heating and drainage components. Thanks to our own applied research, Pražská strojírna a.s. can solve special and demanding requirements such as the usage of special abrasion-resistant materials like Hardox and Dillidur, for production of frogs at extremely exposed areas etc. All constructed materials are welded in accordance with approved technologies and standards. The technical specification of rail construction is an inseparable part of its definition (courses and shapes of grooves in crossings, production clearances, inspection, description of the rail construction, transport units, technical documentation supplied with product, etc.) As basic material for manufacturing of tramway rail crossings, grooved rails are used with required profile (NT1, 60R2, 60R1, 59R2, 59R1, 55R1, 57R1...) and required quality (R200, R220, R260, R260V, R290, R290GHT-CL etc.). Shallow or narrow grooved crossings and frogs are made from full-head rail profiles and steel blocks in quality R260, as standard in accordance with German VDV standards. Any exposed surfaces can be treated by hard-weld overlay. Pražská strojírna a.s. also carries out guarantee and post-guarantee services for all of its products upon agreement.

Pražská strojírna a.s.



+420 284 810 852



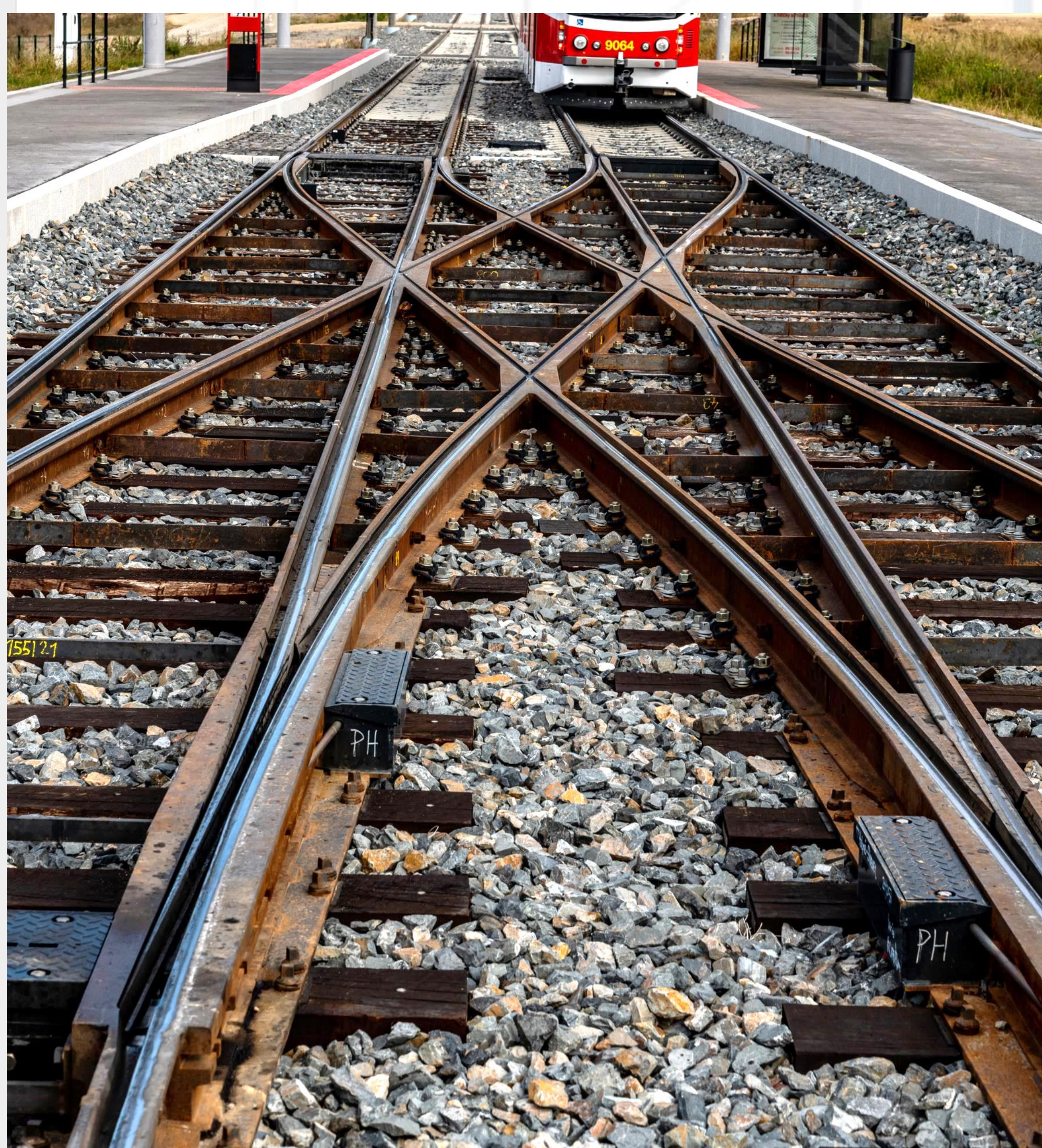
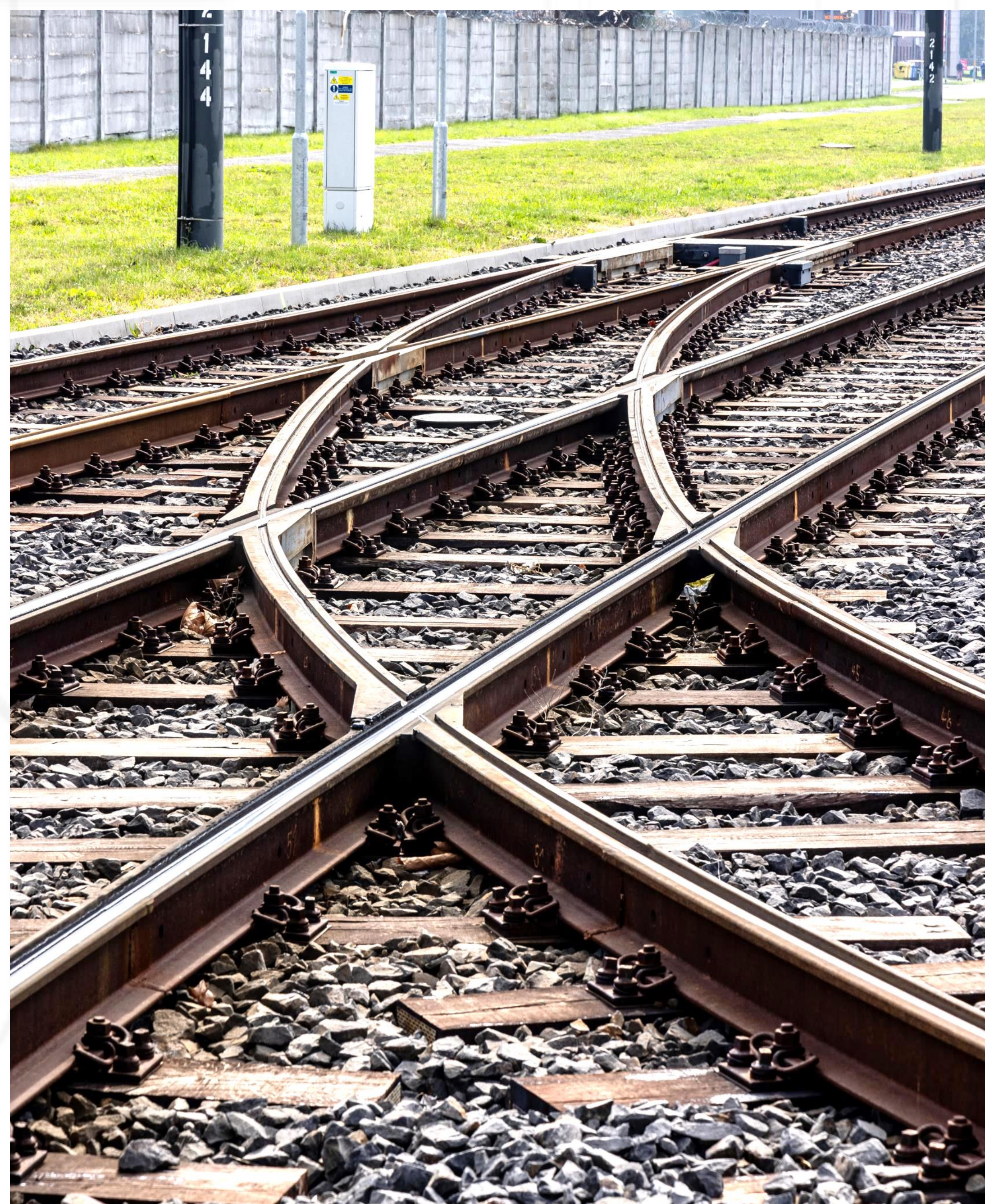
info@pstroj.cz



www.pstroj.cz

Pražská strojírna a.s.

Tramway crossing



Pražská strojírna a.s.