

# Automatic pointing machine VSP-1-K



- Setting device VSP-1-K is designed for mechanized resetting of the turnouts with flexible blades to required end positions.
- VSP-1-K is ecologically friendly, meets high level of cross-over safety (SIL 3 requirements for safety integrity according to EN 61508) and features long life with minimum maintenance demands.
- A setting system can be adapted to needs and requirements of individual customers.



Electro-magnetic power device EMP-44.



Electro-hydraulic power device EHP-41.

**Pražská strojirna a.s.**



+420 284 810 852



info@pstroj.cz



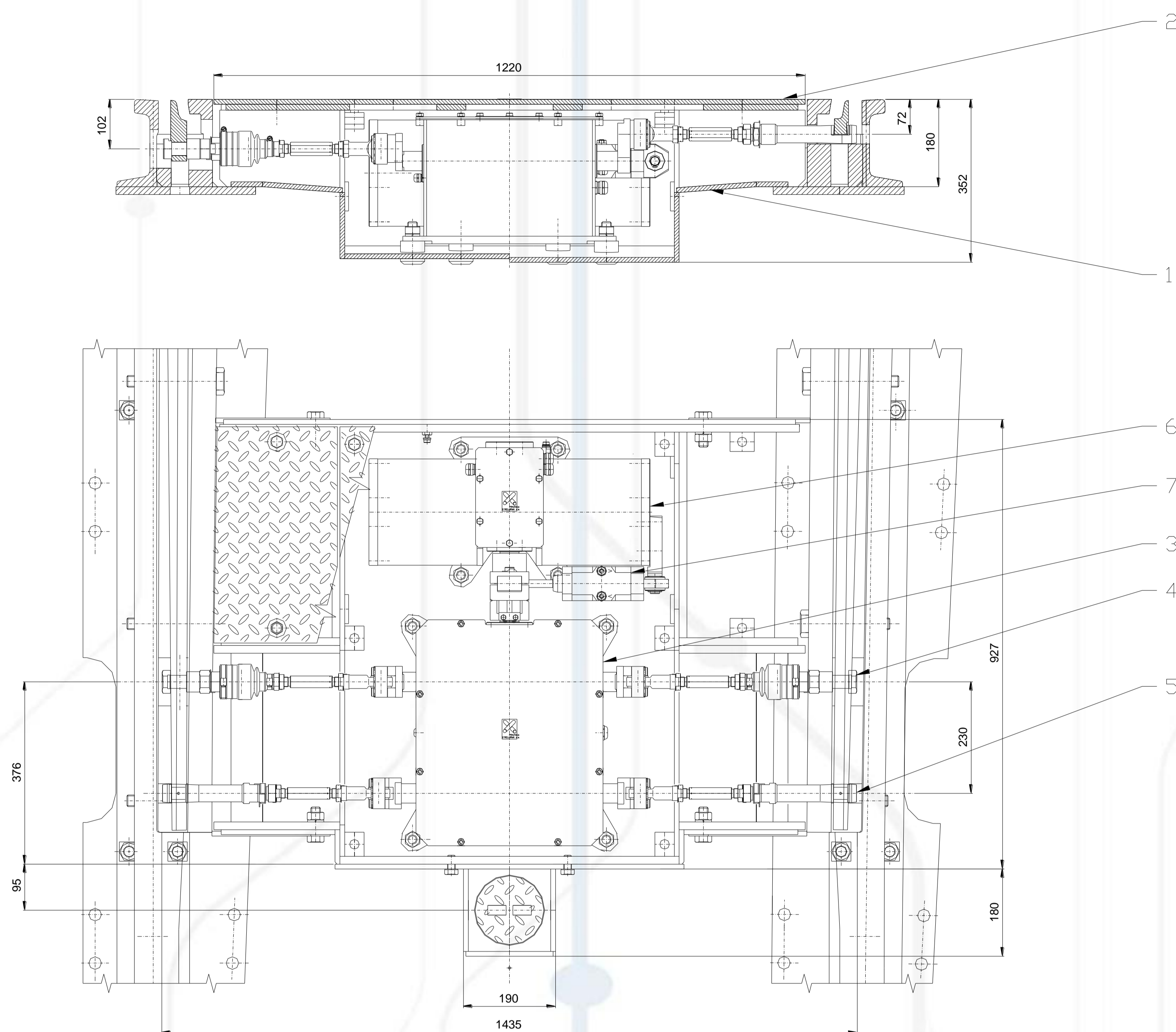
www.pstroj.cz

## Securing:

- down-pressure of the setting rod in both extreme positions
- locking the setting rod in both extreme positions
- signalling both extreme positions of both checking rods
- signalling of blocking the command for resetting when inserting the key into setting pocket
- deformation-free force resetting ("force open")
- optionally, the turnout system includes diagnostic elements (oil pressure and oil level measurement, turnout system, flooding sensor and other options as ordered by the user)

Pražská strojirna a.s.

# Automatic pointing machine VSP-1-K



## Description:

1 - Earth case

2 - Earth case covers

3 - Patented pointing mechanism ZK-75

4 - Setting rods

5 - cecking rods

7 - Damper DD-100

6 - Electro-magnetic power device EMP-44 with damper DD-100 or Electro-hydraulic EHP-40 power device

Device is waterproof.

All used materials guarantee high reliability and moisture resistance. Central drainage in earth case allow connection to track drainage system.

This device may be equipped by including diagnostic elements for monitoring hydraulic pressure, hydraulic oil level, flood, throw-over time, throw-over events, temperature in the turnout system and others that communicates with automatic diagnostic system.

## Technical parameters:

Minimum track gauge	1000 mm
Lift of changeable switch blades	36 to 75 mm
Connection setting rod/tongue	according turnout type
Setting force on the rod	approx. 5 kN
Press-down force of spring mechanism	1,3 až 2,2 kN
Minimum setting moment	50 to 250 Nm
Time of mechanized setting (adjustable)	0,6 to 1,5 s
Operational voltage of electro-magnetic power device	400 až 850 V DC
Operational voltage of electro-hydraulic power device	230 / 400 V AC
Normal current at 600 V DC	max. 10,5 A
Control voltage (control-free position sensors)	24 V DC
Permitted axle load on earthcase cover	12 000 kg
Earth case cover weight	70 kg
Overall weight	approx. 630 kg

**Pražská strojirna a.s.**



+420 284 810 852



info@pstroj.cz



www.pstroj.cz

Pražská strojirna a.s.