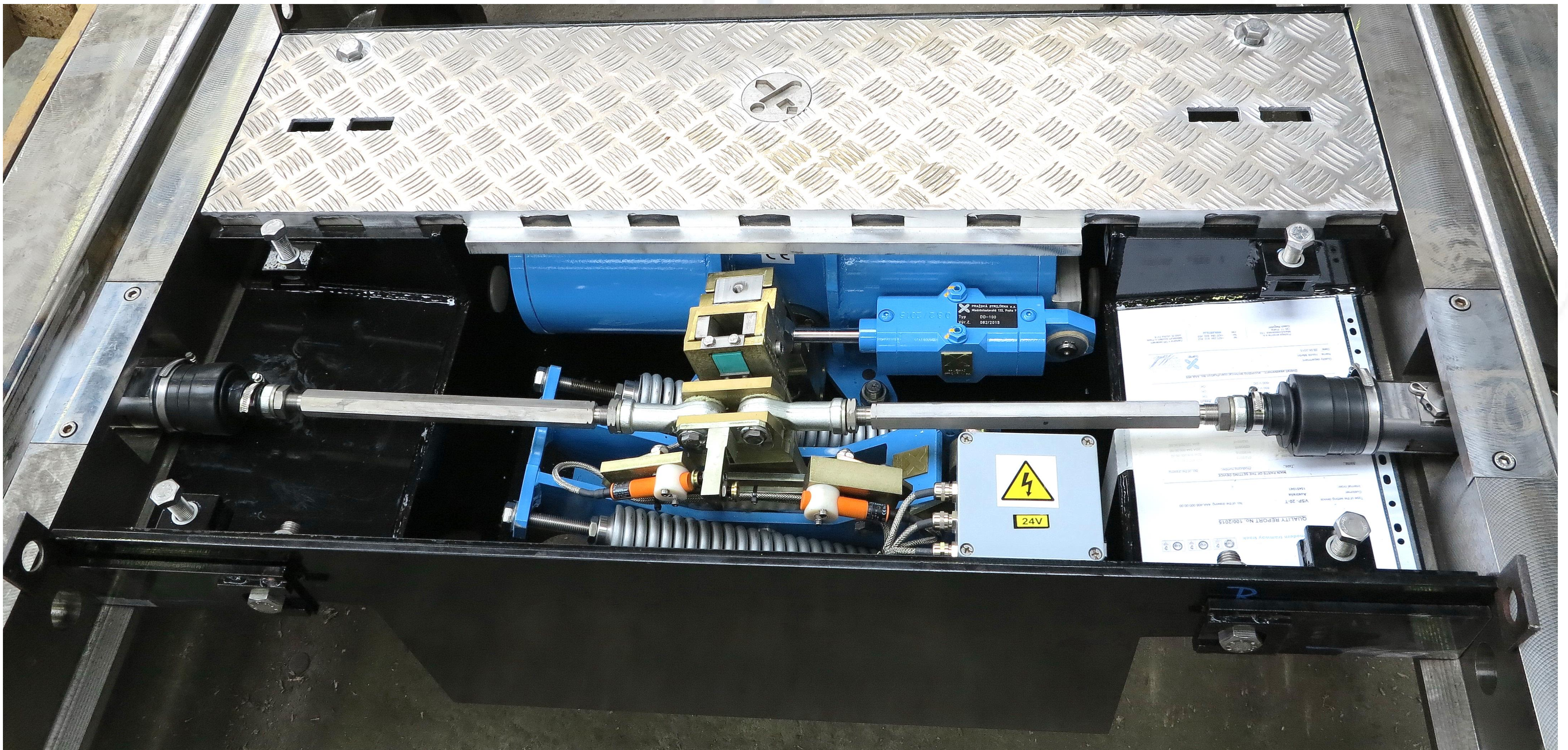
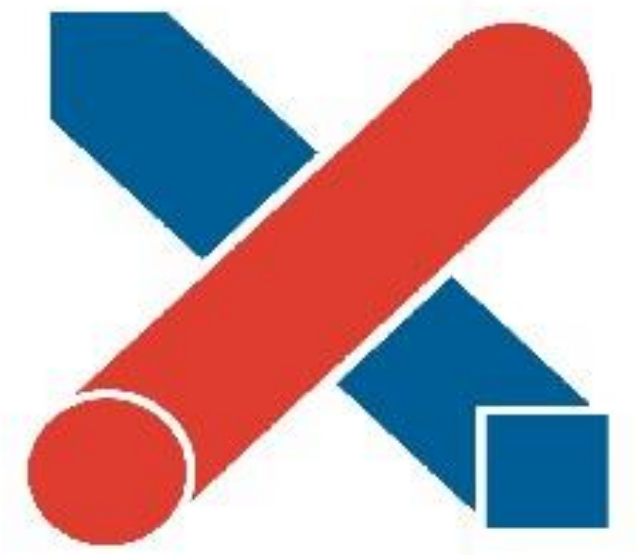


Motorized pointing machine VSP-20



- Setting device VSP-20 is designed for mechanized or manual resetting of the turnouts with flexible blades to required end positions.
- VSP-20 is ecologically friendly, guarantees noiseless function and features long life with minimum maintenance demands.
- A setting system can be supplied also in design for single blade turnouts in alternatives for placement inside or sideway to the track gauge.
- The setting system can be extended by optional set of blade position signaling sensors.



Electro-magnetic power device EMP-44



Electro-hydraulic power device EHP-41.

Pražská strojirna a.s.



+420 284 810 852



info@pstroj.cz



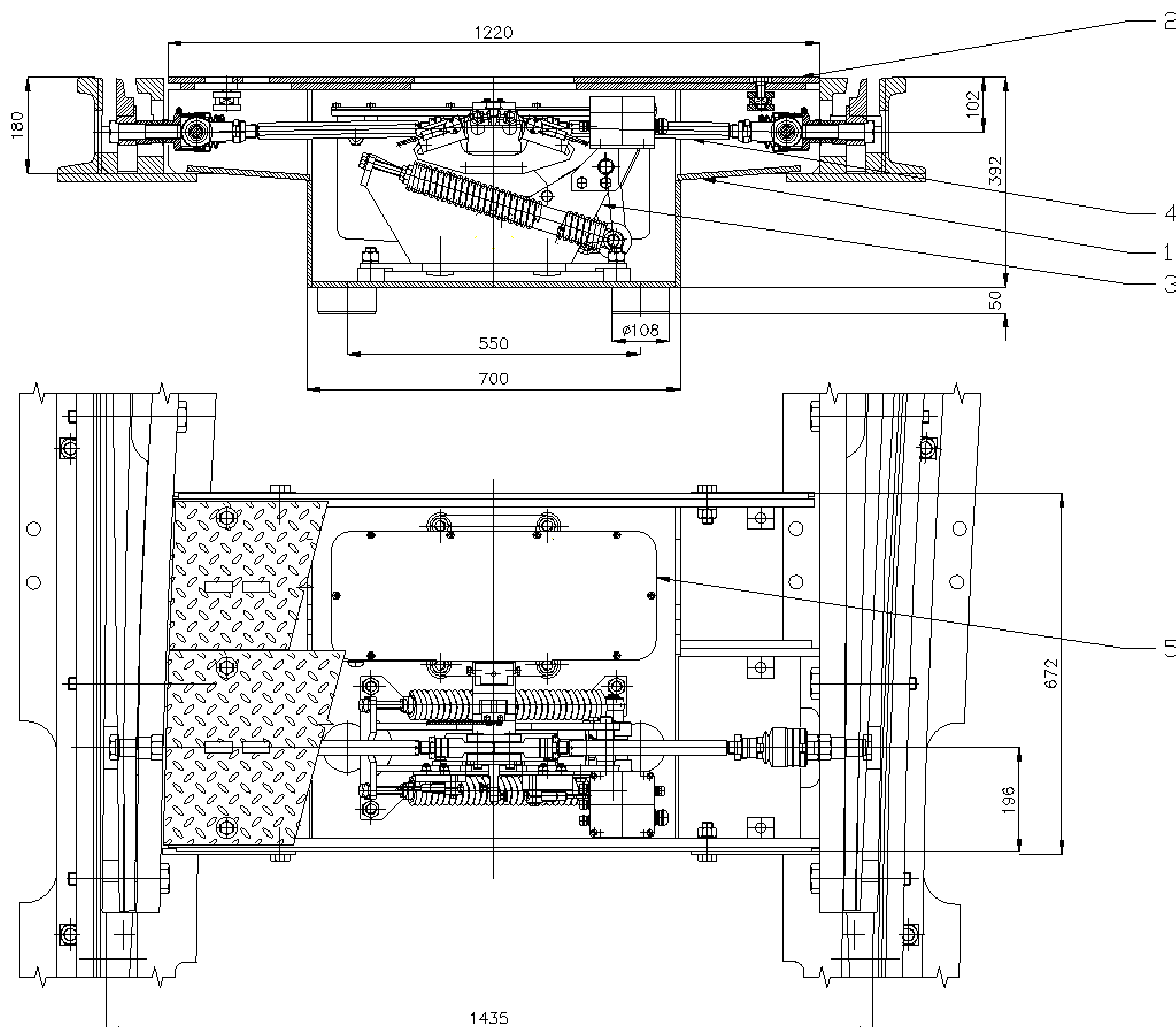
www.pstroj.cz

Securing:

- down-pressure of the setting rod to the position given by the last passage,
- the setting device can be completed by signalling the position of the blades.

Pražská strojirna a.s.

Motorized pointing machine VSP-20



Description:

- 1 - Earth case
- 2 - Earth case covers
- 3 - Patented pointing mechanism Z-75-R
- 4 - Setting rod
- 5 - Electro-magnetic power device with damper or Electro-hydraulic power device

Device can be equipped by adaptor set with position sensors.

All used materials guarantee high reliability and moisture resistance.

Central drainage in earth case allow connection to track drainage system.

Technical parameters:

Minimum track gauge	od 1000 mm
Lift of changeable switch blades	36 to 70 mm
Connection setting rod/tongue	according turnout type
Setting force on the rod	cca 5 kN
Press-down force of spring mechanism	0,5 to 4 kN
Manual setting moment	80 to 350 Nm
Time of mechanized setting (adjustable)	0,6 to 1,5 s
Operational voltage of electro-magnetic power device EMP-44	400 to 850 V DC
Operational voltage of electro-hydraulic power device EHP-40	600V DC, 750V DC, 400V AC, 230V AC, 110V AC 60Hz
Normal current at 600 V DC	max. 10,5 A
Control voltage (control-free position sensors)	24 V DC
Permitted axle load on earthcase cover	12 000 kg
Earth case cover weight	50 kg
Overall weight	cca 450 kg

Pražská strojirna a.s.



+420 284 810 852



info@pstroj.cz



www.pstroj.cz